

MONTHLY MEMBERSHIP PROGRESS REPORT

District 13 OH1

Results as of: 6/30/2024

GMT:

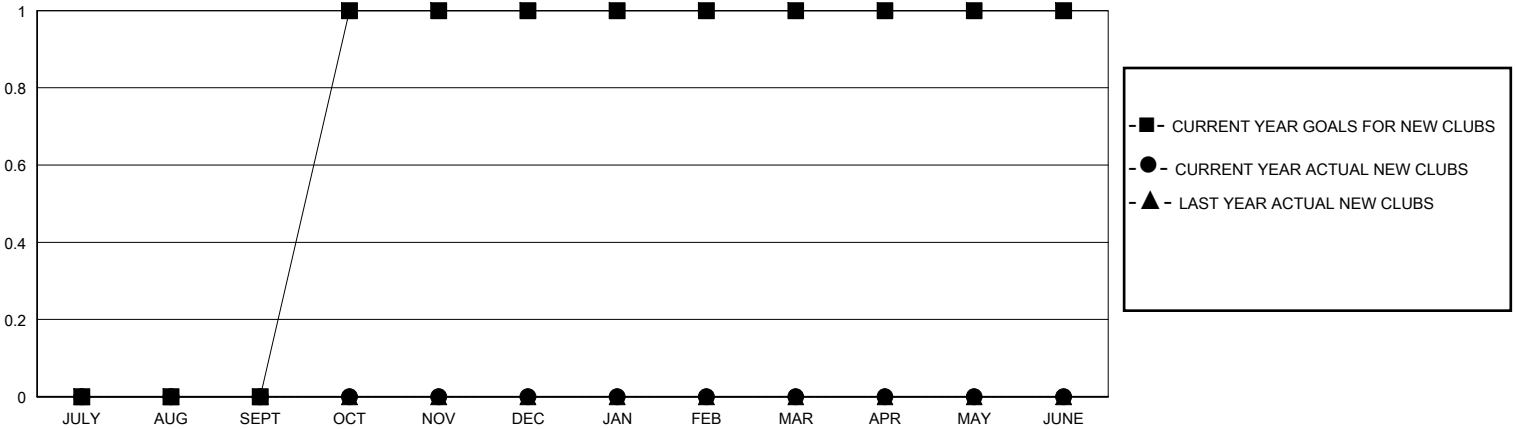
LOCATION OHIO

GMT CA

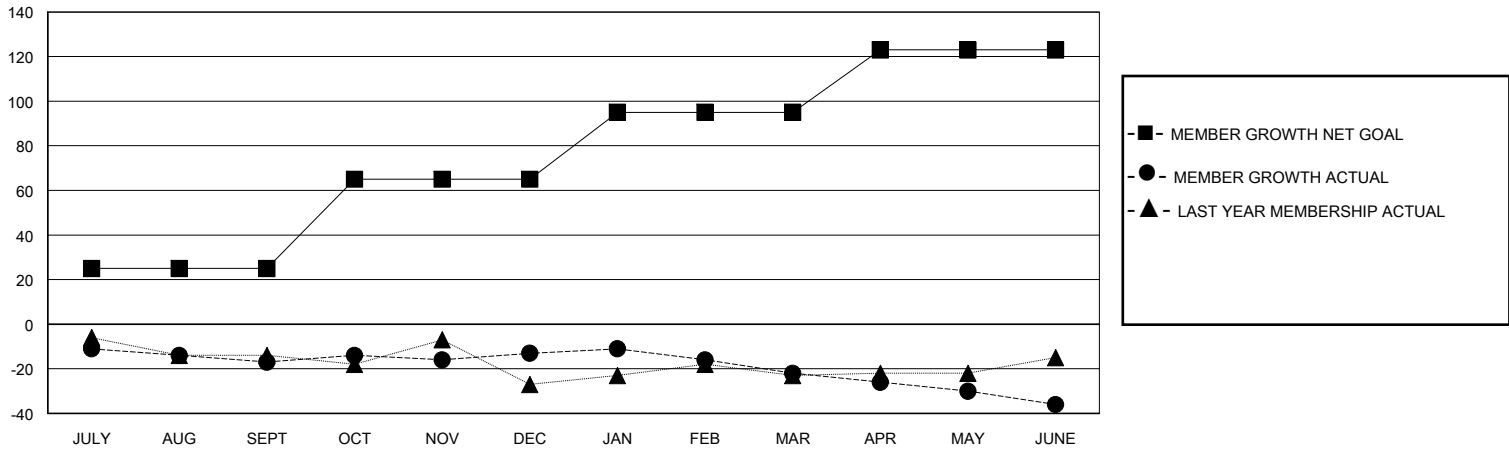
Clubs			
RESULTS FOR 2023-2024			
QUARTER	NEW CLUB GOAL	NEW CLUBS	DROPPED CLUBS
JULY/AUG/SEPT	0	0	0
OCT/NOV/DEC	1	0	0
JAN/FEB/MAR	0	0	0
APR/MAY/JUNE	0	0	0

Members			
RESULTS FOR 2023-2024			
QUARTER	MEMBER GROWTH NET GOAL	MEMBER GROWTH ACTUAL	DROPPED MEMBERS ACTUAL (including transfers)
JULY/AUG/SEPT	25	17	32
OCT/NOV/DEC	40	24	19
JAN/FEB/MAR	30	11	18
APR/MAY/JUNE	28	13	26

GOALS AND ACTUAL NEW CLUBS CUMULATIVE



GOALS AND ACTUAL MEMBERS CUMULATIVE



DROPPED CLUBS: 0	22 CLUBS OF 49 ADDED 1 OR MORE NEW MEMBERS	GENDER DISTRIBUTION
		MALE 1,102 (78.60%)
		FEMALE 300 (21.40%)
DROPPED MEMBERS	CLICK HERE FOR CUMULATIVE MEMBERSHIP DATA	TOTAL FAMILY UNIT MEMBERS 244
DECEASED 24		FAMILY MEMBERS PAYING HALF DUES 125
CLUB CANCELLED 0		
OTHER 71		
TOTAL 95		